



801/85 New South Head Road Edgecliff NSW

1 1 1

Light-filled interiors, elevated park and water views and prime harbourside location make this generous one-bedroom apartment instantly appealing. Its north-facing position in the stylish 'Bayside Apartments' gives it a leafy outlook over Rushcutters Bay Park, plus it is well presented throughout and ready to move in and enjoy. This superb home also enjoys a great position with easy access to the harbourfront and foreshore walks, with shopping and transport an easy stroll from the front door.

- * A well-sized design featuring a bright and airy open living space
- * North-facing balcony that captures views through to the water
- * The generous bedroom is fitted with large built-in

Type : Apartment
Price : \$880,000
View : <https://www.srmetro.com.au/sale/nsw/eastern-suburbs/edgecliff/residential/apartment/8170264>



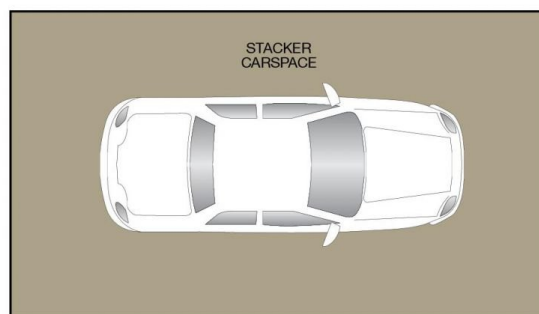
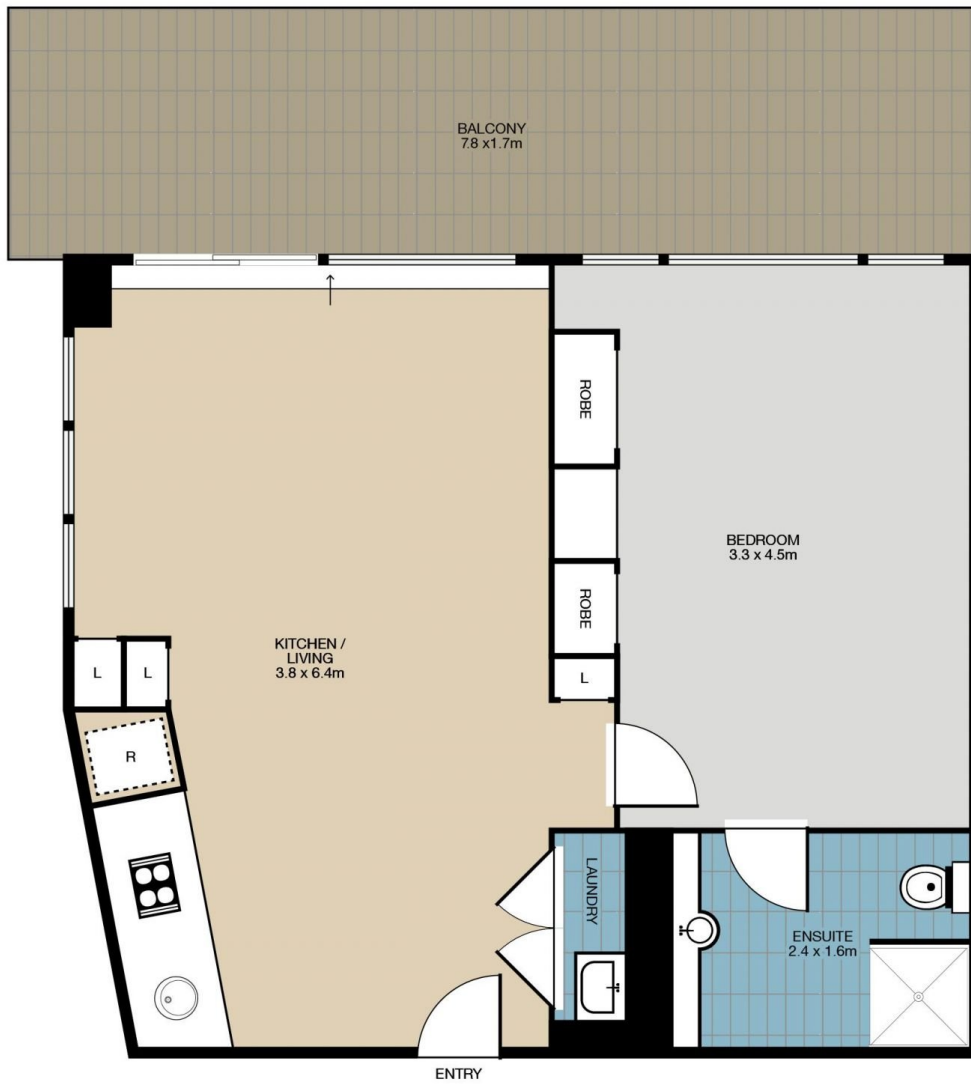
Wilson Diec
02 9283 2832



Bernard Tsang
02 9283 2832

[For full version visit the website](https://www.srmetro.com.au)

<https://www.srmetro.com.au>



801/85 New South Head Road, EDGECLIFF



Total size (approx.): 57m²

This floor plan is intended as a guide only. Layout dimensions are approximate only. No representations or warranties of any nature whatsoever are given or intended. Any person using this information should rely on their own enquiries. Floor plans by Josef Geranio Studio