



**1002/361 Sussex Street Sydney NSW**

2 2 1

Positioned in the very vibrant heart of the city's famed entertainment district, with moments to Darling Harbour and stroll to World Square shopping, Darling Square eateries; the Regal Apartments is an established popular residence surrounded by an array of cafes, restaurants, shopping and all the great amenities City has to offer.

Fully renovated to contemporary standard  
 East facing aglow with morning sun  
 Functional layout with separate living and dining  
 2 spacious bedrooms, main with ensuite bathroom  
 Valuable car space on separate title  
 Proven consistent good rental return

Strata levy: \$2,049 qtr approx

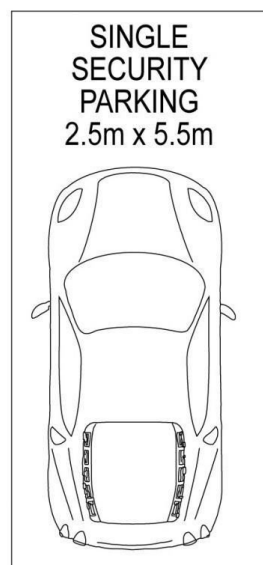
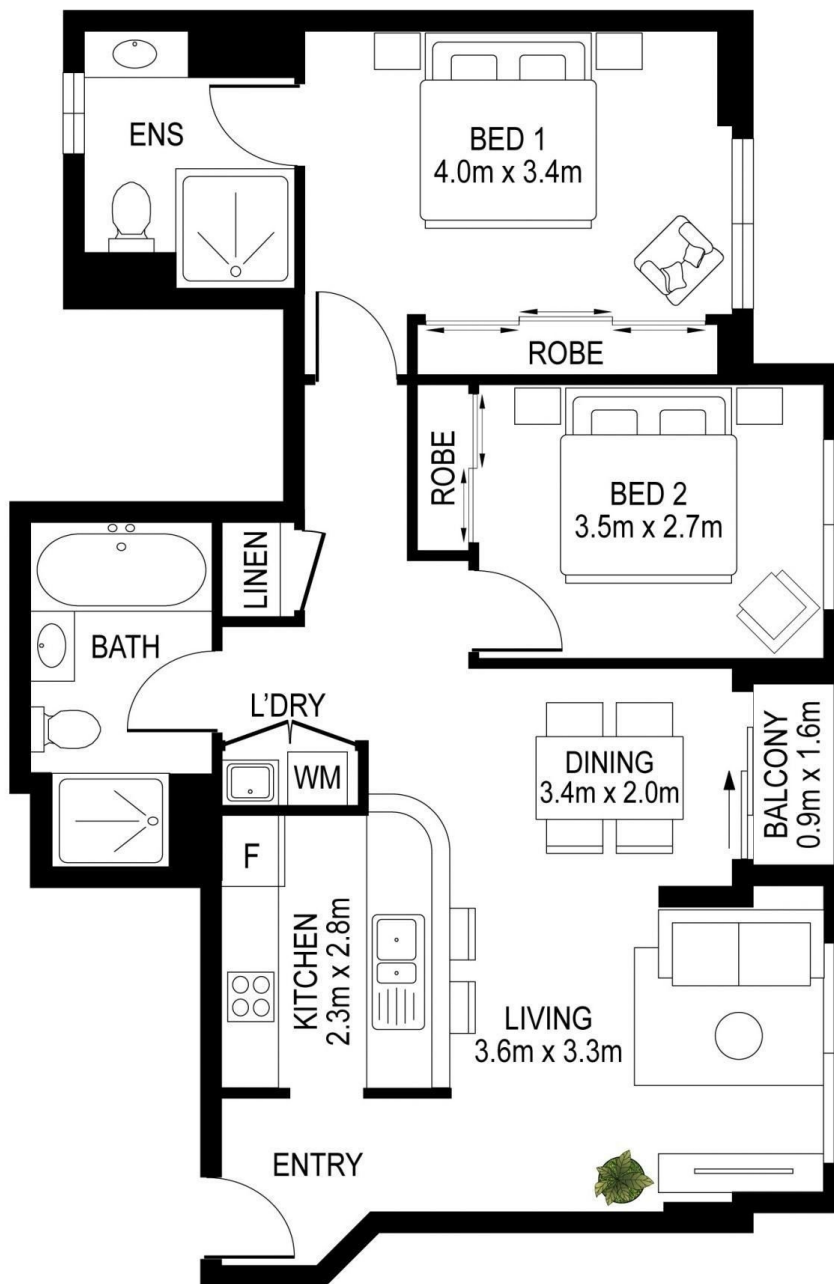
[For full version visit the website](https://www.srmetro.com.au)

**Type** : Apartment  
**Price** : \$950,000  
**View** : <https://www.srmetro.com.au/sale/nsw/sydney-city/sydney/residential/apartment/8148406>



**Paul Ding**  
 02 9283 2832

<https://www.srmetro.com.au>



**1002/361 Sussex Street, Sydney**



DISCLAIMER: 3D Property View accepts no liability for the accuracy of details contained within our floor plans. All plans are drawn and also checked to the best of our ability, however information contained in our floor plans such as area calculations are approximate, and have not been surveyed or drawn to scale. Our floor plans are for representative purposes only and should be used as such. Do not attempt to refer to our floor plans for structural or detailed information.