



## 2 Quay Street Sydney NSW

3 2 2

In the ultimate lifestyle location, this generous-sized 36th floor apartment features a spacious open layout with good quality finishes, lots of natural light and expansive views that spread over the city and beyond. It is ideally situated close to the heart of the CBD, and on the doorstep of Chinatown's vibrant restaurant, cafe and entertainment precinct.

- A bright north aspect with sweeping panoramas over the city
- Open plan living space wrapped in large picture windows
- Three double bedrooms are each fitted with built-in robes
- A private sunlit balcony plus 2 security car space
- Modern gas kitchen, two full bathrooms and internal laundry

**Type** : Apartment

**View** : <https://www.srmetro.com.au/lease/nsw/sydney-city/sydney/residential/apartment/5716969>

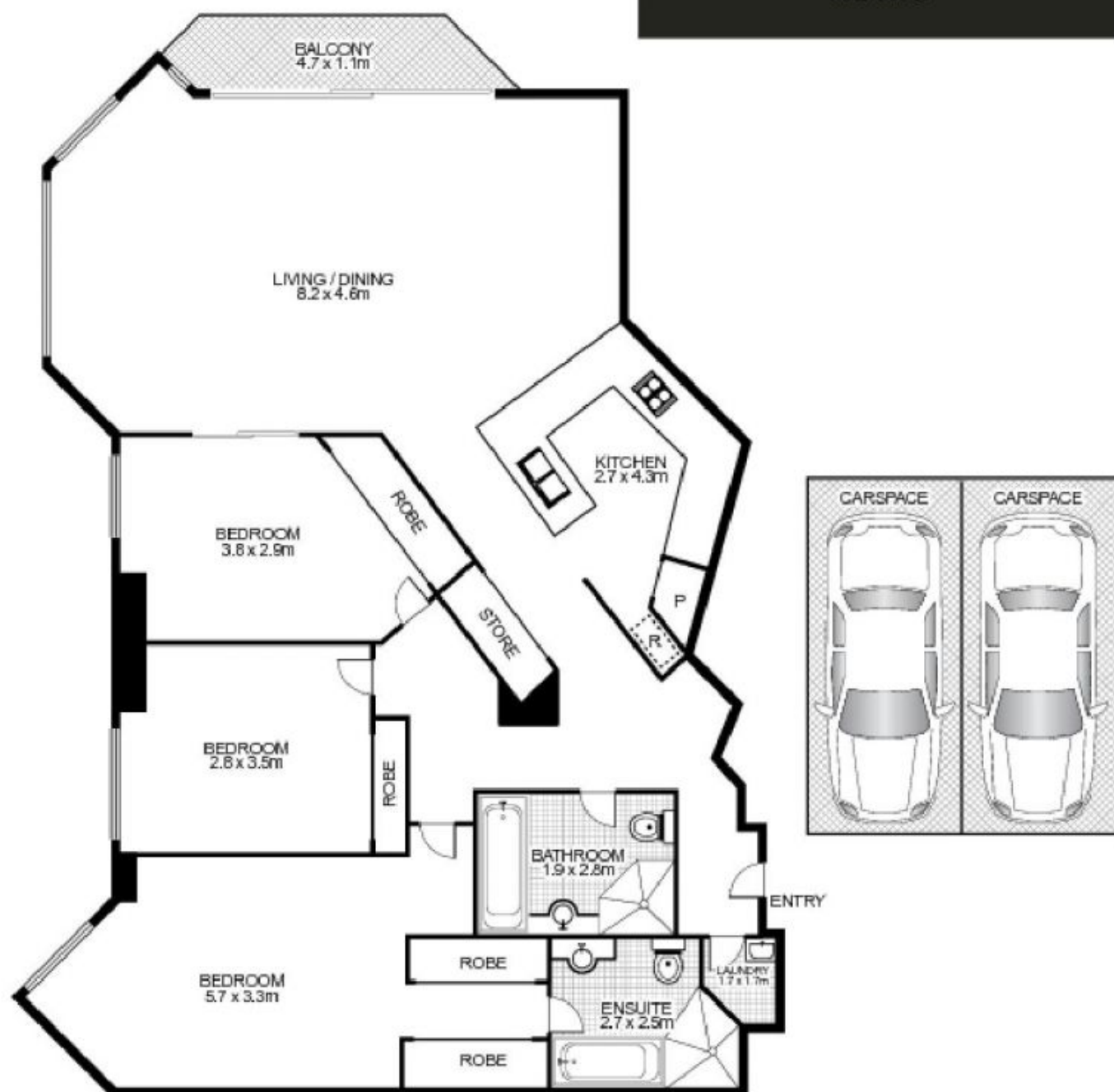


**Cathryn Chen**  
02 9283 2832

[For full version visit the website](https://www.srmetro.com.au)

<https://www.srmetro.com.au>

# SYDNEY RESIDENTIAL METRO



3610/2 Quay Street, HAYMARKET



**NORTH**

This floor plan is intended as a guide only. Layout dimensions are approximate only. No representations or warranties of any nature whatsoever are given or intended. Any person using this information should rely on their own enquiries. Floor Plans by SURROUNDPIX.