



### Level 8/158 Day Street Sydney NSW

2 2 1

Positioned in the very vibrant heart of the city's famed entertainment district, directly opposite Darling Harbour and stroll to Town Hall station, the Millennium Tower is an established residence surrounded by an array of cafes, restaurants, theatre, shopping centres and all the great amenities city has to offer.

- Desirable corner position with minimal common wall
- Open plan living /dining extending to sunny enclosed balcony
- Darling Harbour views
- Master ensuite with full bath and window for ventilation
- Double glazed windows in both bedrooms
- Deluxe stainless steel kitchen with granite bench top
- Large internal laundry

**Type** : Apartment

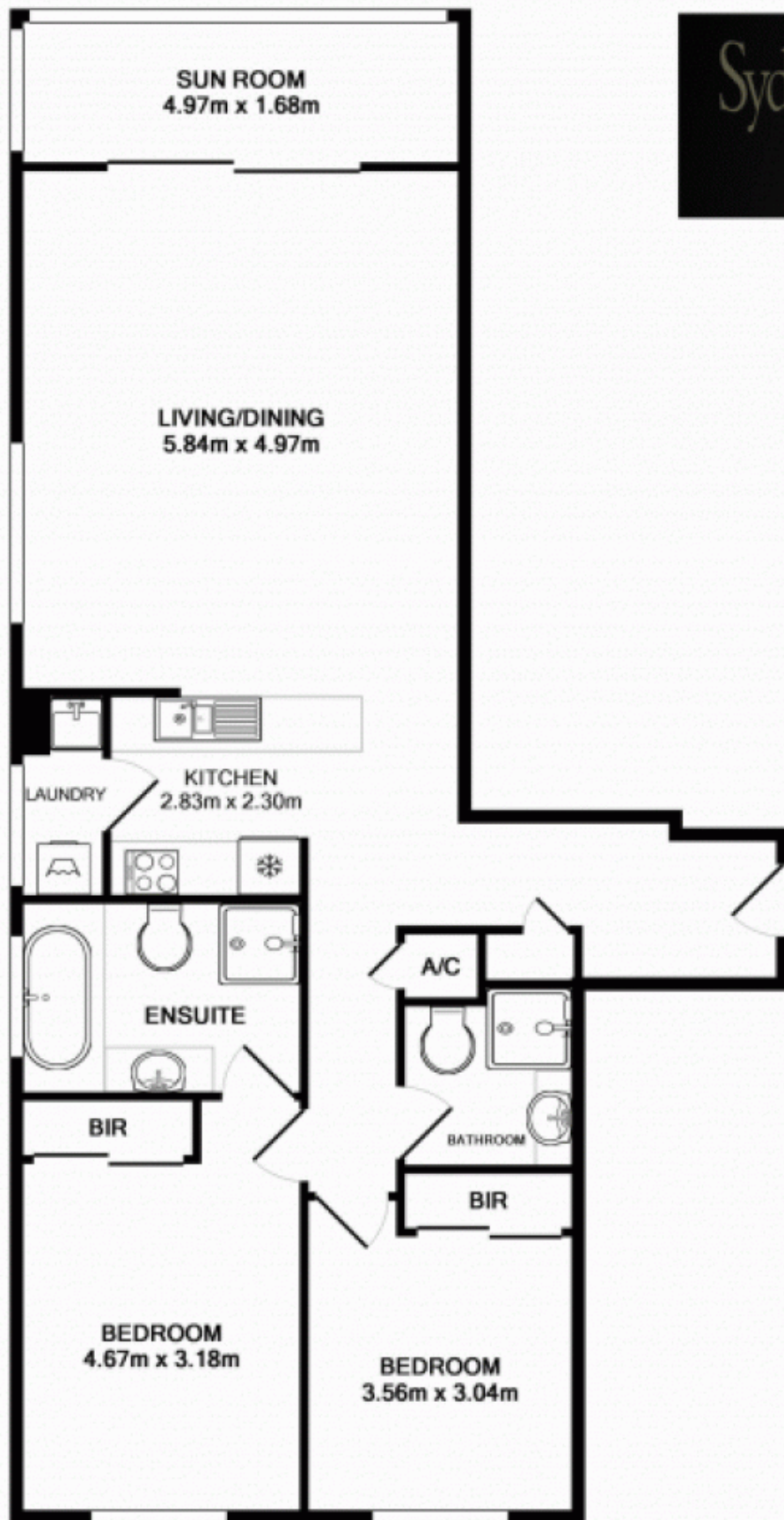
**View** : <https://www.srmetro.com.au/lease/nsw/sydney-city/sydney/residential/apartment/5716872>



**Ben Murray**  
02 9283 2832

[For full version visit the website](https://www.srmetro.com.au)

<https://www.srmetro.com.au>



APARTMENT  
APPROX. FLOOR  
AREA 95.0 SQ.M.



LUG  
APPROX. FLOOR  
AREA 16.0 SQ.M.

TOTAL APPROX. FLOOR AREA 111.0 SQ.M.  
Measurements are approximate. Not to Scale. For illustrative purposes only.  
Produced by Open2View.com.au