



348-354 Sussex Street Sydney NSW

2 1

Live a convenient and trendy inner city lifestyle in this charming and affordable two bedroom apartment positioned on the 20th floor of the popular 'Landmark' building.

- Combined lounge & dining lead to balcony with views to Darling Harbour
- Interiors awash with ambient afternoon sun throughout
- Generous bedrooms both with balcony access
- Open kitchen with granite top and gas appliances
- Full brick construction; R/C air-conditioning
- Full facilities which include indoor heated pool, sauna & gymnasium

Conveniently placed merely a short stroll to World Square

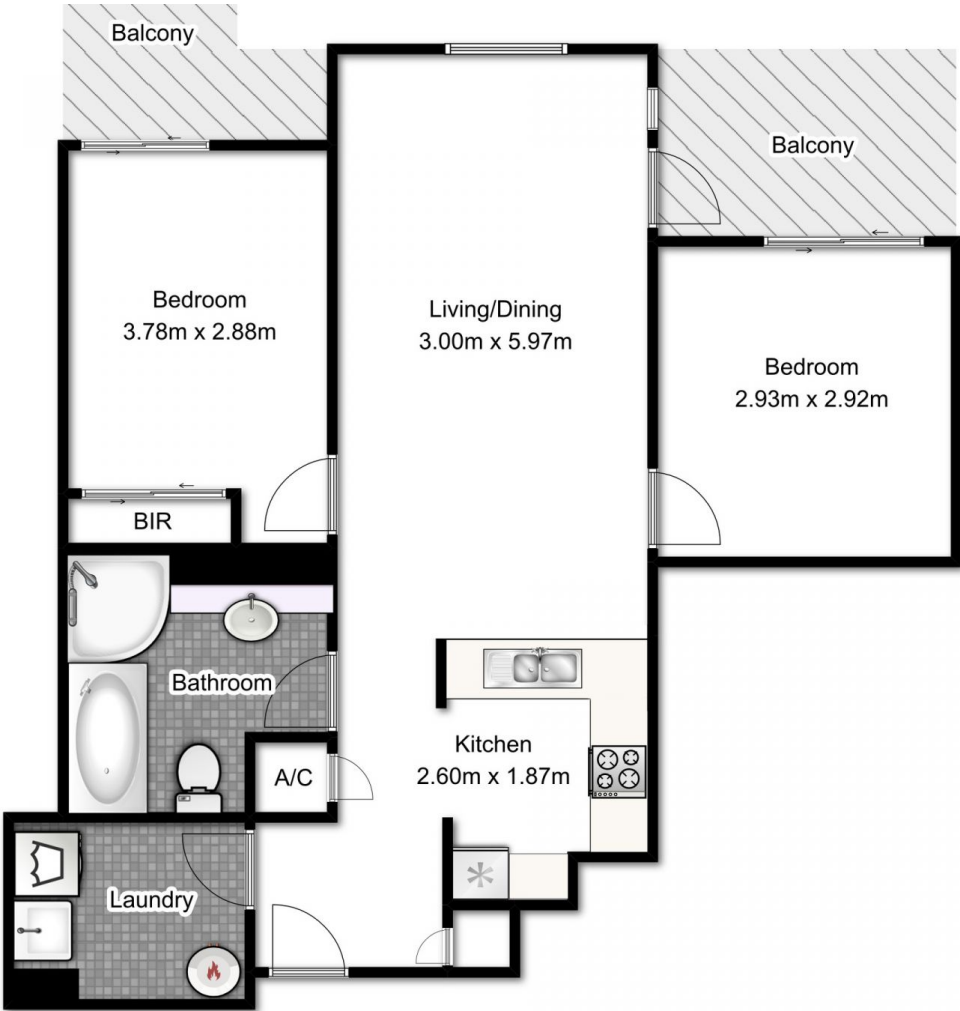
[For full version visit the website](#)

Type : Apartment

View : <https://www.srmetro.com.au/lease/nsw/sydney-city/sydney/residential/apartment/5716558>



Cathryn Chen
02 9283 2832



APARTMENT
APPROX. FLOOR
AREA 72.0 SQ.M



SECURE CAR SPACE
APPROX. FLOOR
AREA 15.0 SQ.M